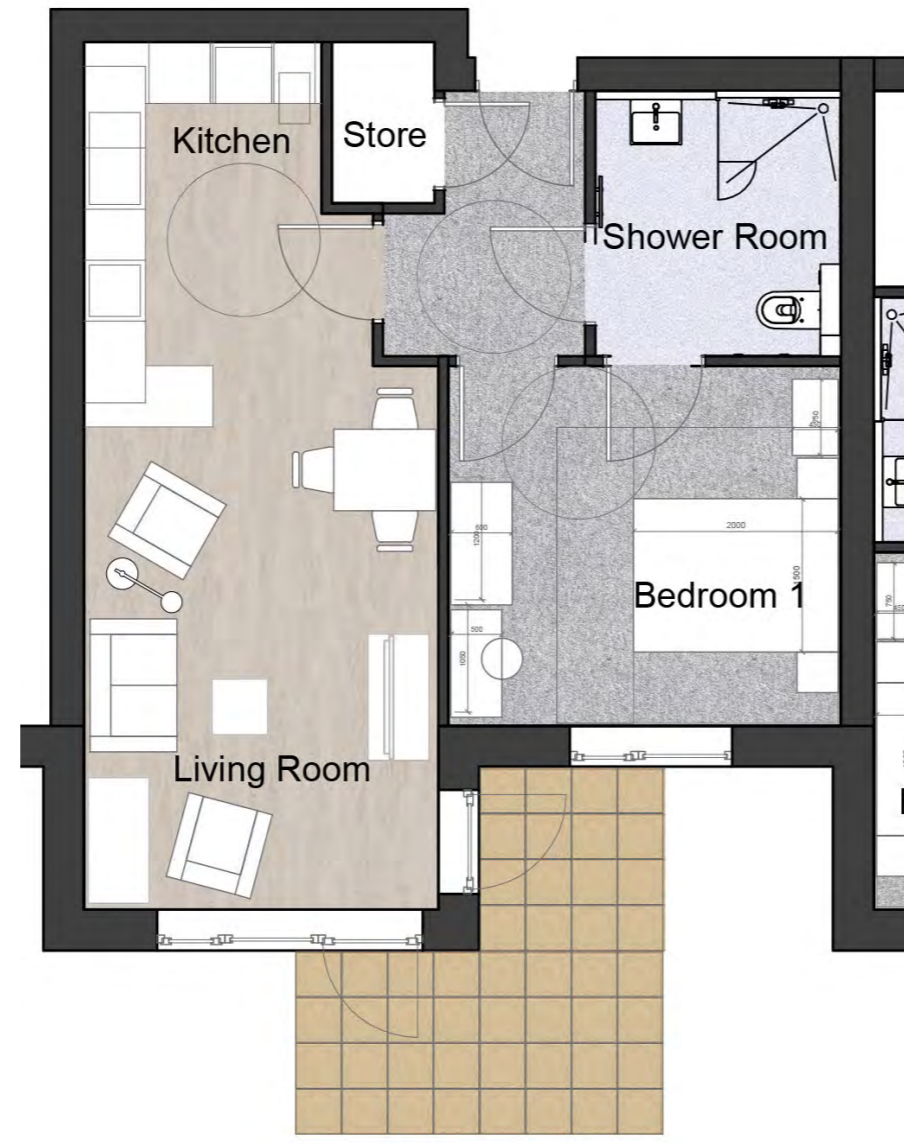


# Accessibility

The accessibility of the scheme is a key to ensure the scheme is easily navigable by residents, staff and visitors. The latest Dementia Design Guidance has been taken into account in addition to the recommendations of the HAPPI Reports which focuses on the provision of housing for older people. There are a number of accessible features including:

- Lift access to all floors
- Level threshold doorways to all external doors
- Wide corridors and door ways
- Colour coded decor at each floor
- Disabled parking bays
- Level access to all external garden areas
- Mobility scooter storage
- Minibus drop off point



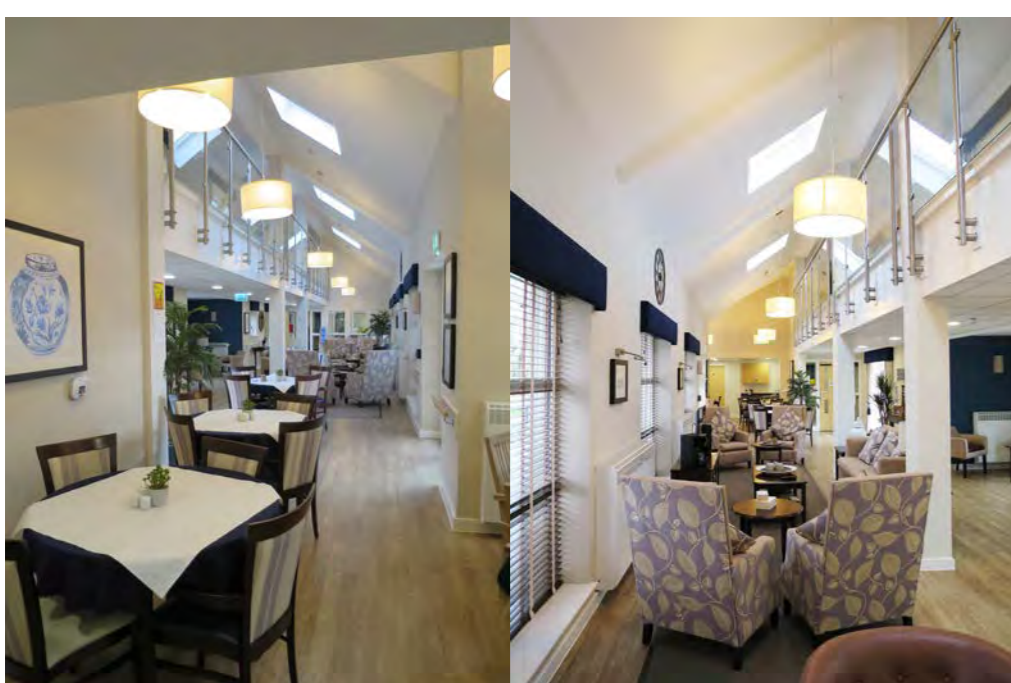
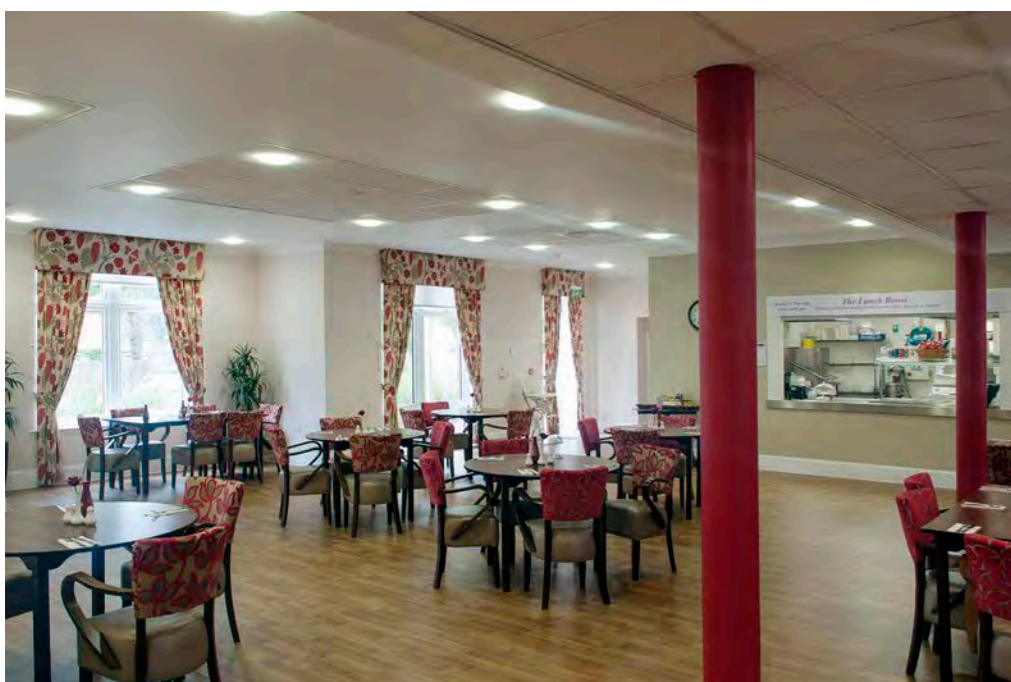
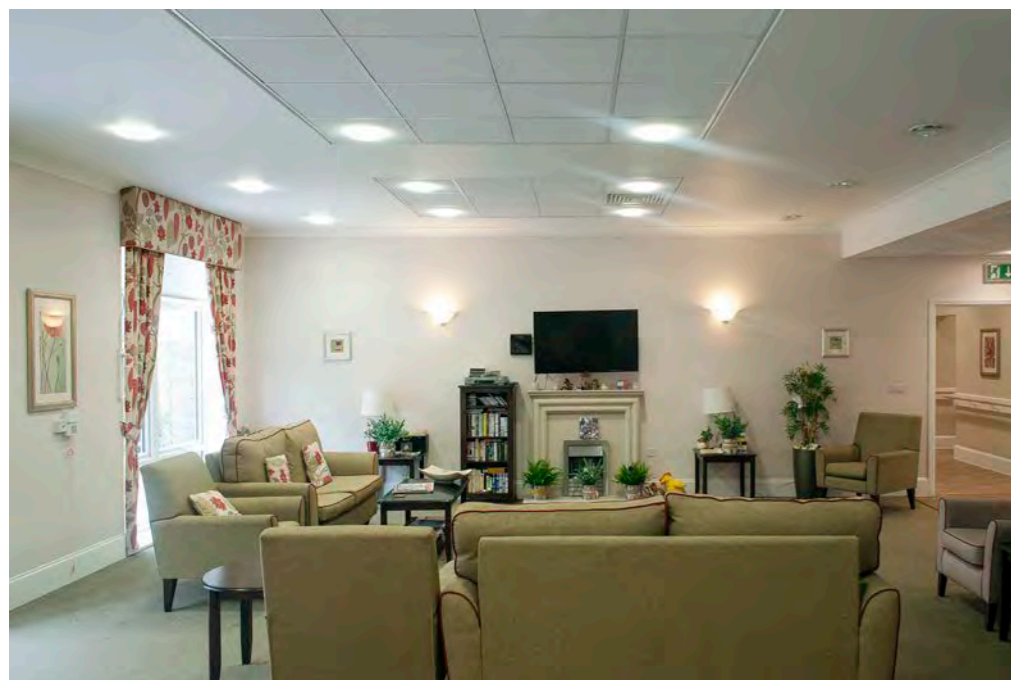
Typical 1 Bed Apartment



Typical 2 Bed Apartment



Typical 2 Bed Bungalow



Images of Typical Communal Areas



Proposed First Floor Plan

- Balcony
- Corridor
- Comunal
- 2 Bed
- 1 Bed
- Walls



Proposed Ground Floor Plan

- Patio
- Corridor
- Comunal
- 2 Bed
- 1 Bed
- Walls

